

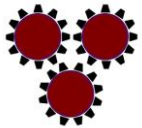
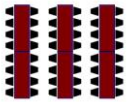
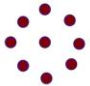
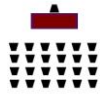
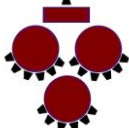
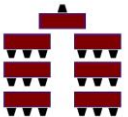





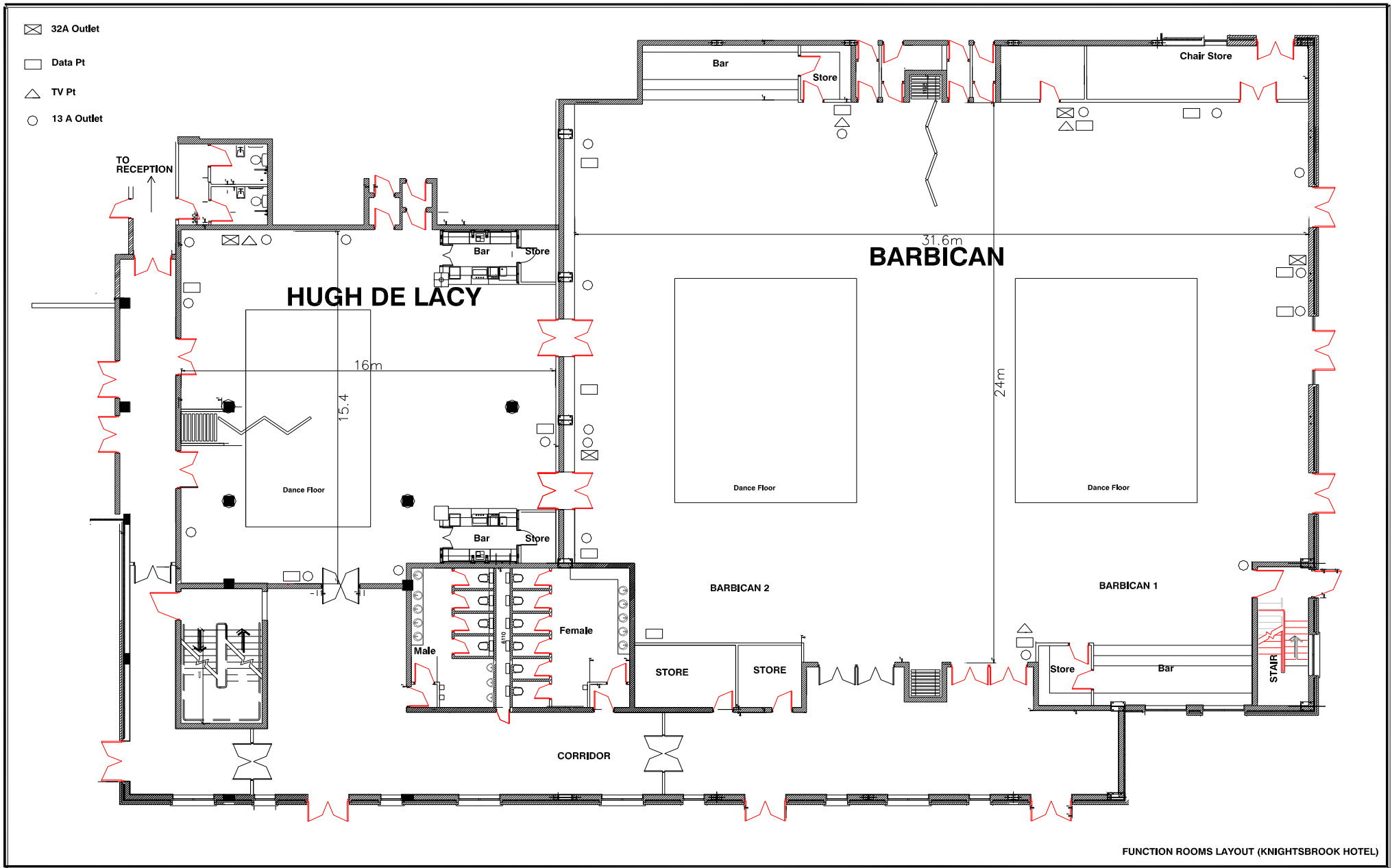
ROOM DIMENSIONS

<u>VENUE</u> <u>DETAILS</u>	ROOM LOCATION	FLOOR AREA IN SQUARE METRES	DIMENSIONS IN METRES	MINIMUM CEILING HEIGHT IN METRES
BARBICAN SUITE	Ground	758	31.6 x 24	4
BARBICAN SUITE I	Ground	379	15.8 x 24	4
BARBICAN SUITE II	Ground	379	15.8 x 24	4
HUGH DE LACY SUITE	Ground	246	16 x 15.4	3
HUGH DE LACY SUITE I	Ground	134	16 x 8.4	3
HUGH DE LACY SUITE II	Ground	112	16 x 7	3
BARBICAN CONCOURSE	Ground Floor	71	19.7 x 3.6	2.5
HUGH DE LACY CONCOURSE	Ground Floor	93	3.6 x 11+ 8.9 x 6	2.5
GULLIVER'S SUITE	Golf Club	324	11 x 29.5	2.5
GULLIVER'S SUITE I	Golf Club	130	11 x 11.8	2.5
GULLIVER'S SUITE II	Golf Club	195	11 x 17.7	2.5
ASH ROOM	Mezzanine	68	8.5 x 8	2.5
OAK ROOM	Mezzanine	55	10 x 5.5	2.5
MAPLE ROOM	Mezzanine	25.5	6.7 x 3.8	2.5
SWIFTS BAR	Ground Floor	235	17.4 x 13.5	2.5



ROOM CAPACITIES

<u>VENUE</u> / <u>STYLE</u>	 BANQUET (ROUND)	 BANQUET (LONG)	 RECEPTION/ INFORMAL	 THEATRE	 CABARET	 CLASSROOM	 HERRINGBONE	 U-SHAPE	 BOARDROOM
BARBICAN SUITE	450	600	1500	1100	260	500	1000	170	170
BARBICAN SUITE I	200	300	750	520	120	250	450	70	70
BARBICAN SUITE II	200	300	750	520	120	250	450	70	70
HUGH DE LACY SUITE	130	160	200	200	80	120	40	40	50
HUGH DE LACY I	60	80	120	60	40	50	20	20	30
HUGH DE LACY II	40	60	60	40	26	20	10	10	18
GULLIVERS	150	200	300	220	100	100	100	40	50
ASH ROOM	24	30	30	35	24	18	20	20	24
OAK ROOM	24	20	20	30	16	18	20	20	24
MAPLE ROOM	-	-	-	-	-	-	-	-	12
ELM ROOM	-	-	-	10	8	8	-	6	8



FUNCTION ROOMS LAYOUT (KNIGHTSBROOK HOTEL)

